

# Wi-Fi Plug Pro

Industrial frequency machine and IVEM



## 1. Installation

1. Align the serial port of the Wi-Fi Plug Pro with the serial port of communication cable and plug it in tightly.
2. Align the RJ45 port of communication cable with the RJ45 port of inverter and plug it in tightly.

## 2. Wireless Router Connection

### 2.1 Download APP

- ① Scan the QR Code on the right side and download the APP.



SmartESS(iOS)



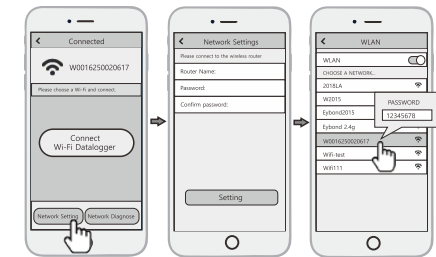
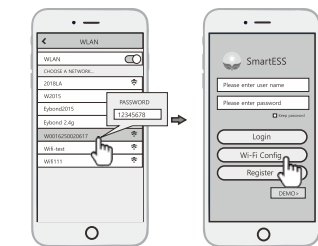
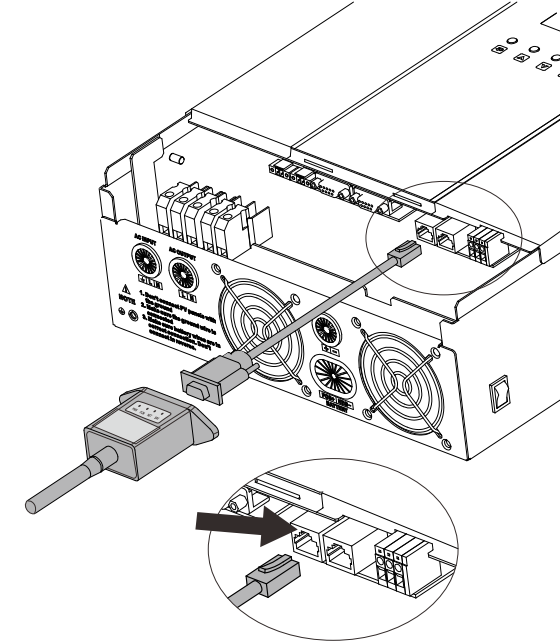
SmartESS(Android)

### 2.2 Connect Wi-Fi Datalogger

- ① Select the same number of Wi-Fi Plug Pro PN to connect on your phone WLAN. (InitialPassword:12345678)
- ② Open the APP, tap the **Wi-Fi Config** button to enter this page.

### 2.3 Network Setting

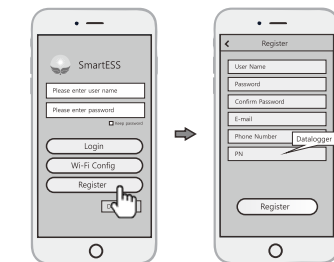
- ① Then tap the Network Setting button.
- ② According to the prompts, type in the information to finish the network setting.
- ③ After the Wi-Fi Plug Pro is restarted, reconnect the Wi-Fi which connected by step 2.1.



## 3. Create Account And Add Datalogger

### 3.1 Create Account

- ① Open the APP, tap the **Register** button to enter this page.
- ② According to the prompts, type in the information to create an account.



### 3.2 Add Datalogger

- ① Login the account and click the **Datalogger** button. Tap the "+" button on the top-right corner of the **Datalogger** page.
- ② Scan the PN on the Wi-Fi Plug Pro, or input it manually.
- ③ According to the prompts, type in the information to finish add datalogger.

